

La Marzocco Technical Bulletin #126

AISI 316L Parts Upgrades

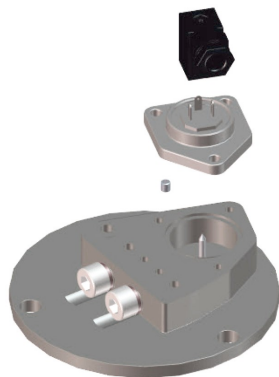
We are pleased to inform you that we have upgraded several parts to AISI 316L stainless steel with the goal of eventually upgrading every component of our machines to this top quality stainless steel. AISI 316L stainless steel is often known as surgical or marine grade steel, as it has very low carbon content and 2.5% molybdenum added. This formulation promotes resistance to corrosion and hence, longer lifespans of parts.

We are proud to list the parts which have been recently upgraded to the AISI 316L.

Group cap parts:

- flow meter pin
- flow meter internal gicleur
- 0.6 mm ruby gicleur. New code F.3.032.01
- 0.7 mm ruby gicleur. New code F.3.033.01
- 0.8 mm ruby gicleur. New code F.3.034.01

The new gicleurs equip all PB and GB5/FB80 starting from serial number: PB003728 GB015184



The material of the core tube of all 2 and 3 way solenoid valves has been upgraded to the AISI316L.

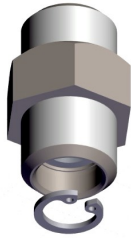




la marzocco

handmade in florence

In addition, the material of the circlip (seeger ring) inside B.2.008.01 check valves (which equips Linea Mini and GS3) has been replaced with AISI316L. The check valve has now code B.2008.02



Please do not hesitate to contact our solutions team with any questions you have about this update.
Solutions.usa@lamarzocco.com